

Motorola CURVE series two-way radio

Firmware Update info

10-Feb-2022

CURVE two-way radios firmware to be updated from:-

Firmware Version R01.00.01 to R01.01.00

Codeplug Version R01.00.00 to R01.01.00

WiFi Board Version R02.00.01 to R02.01.00

Affected Tanapa :-

SUPER TANAPA	Tanapa	Sales Model
PMUF1983A	PMUF1982A	DLR110NBHLAA
PMUF1981A	PMUF1982A	DLR110NBHLAB

This new version provides below features and capabilities

1. Virtual Channel
2. Group Voice Message
3. Intelligent Insight
4. Storewide announcement
5. WiFi Connection Indication
6. WiFi Signal strength indication.

Equipment/Tools needed to perform software update

1. Prepare the below equipment.
 - a. CPS Cable kit is HKKN4027A.
 - b. Single Unit Charger/docking station PMPN4586A.



Computer System Requirements

1. Computer with Windows 10 operating system.
2. Computer with USB port.

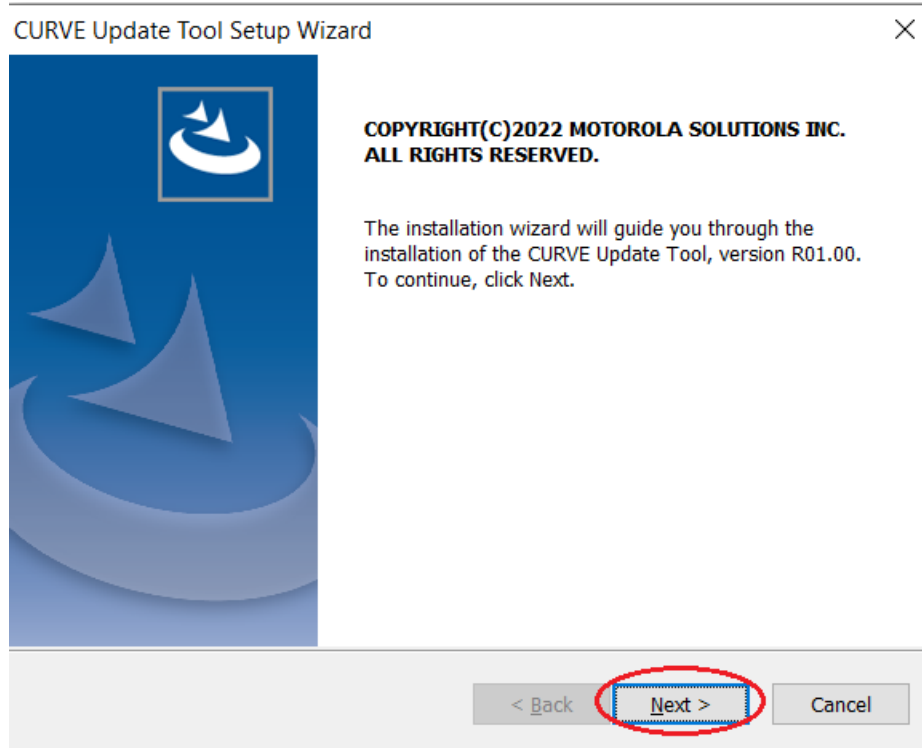
Note

1. Only 1 radio can be updated at any one time.
2. Please ensure the radio battery is fully charged before updating commences.
3. **Please ensure no other FTDI cable is connected to the PC and only CPS cable is connected.**

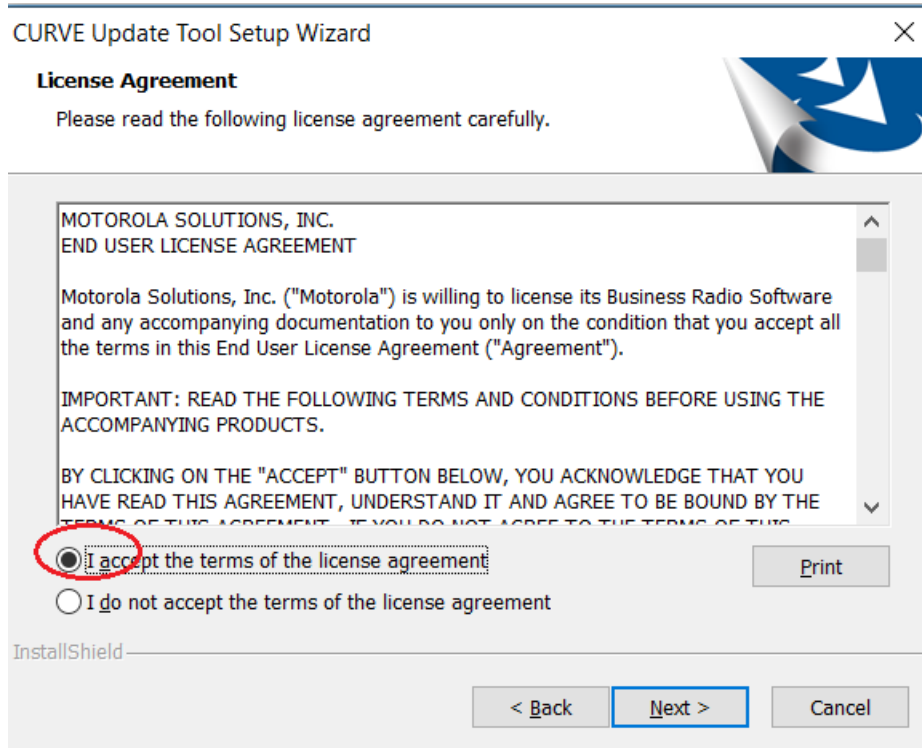
Setup Steps (one time)

1. Connect the programming kit docking/charging station to computer using the USB programming cable from the programming kit.
2. On the programming cable PMKN4154A, please make sure to set the mode switch to Digital CPS.
3. Observed your computer will scan and install the programming cable driver automatically at the background (task tray for Windows computer). This will take a while.
4. Please wait until the driver installation is completed.
5. Download and double click to install the Update Tool application (provided by Motorola Team) into the computer.

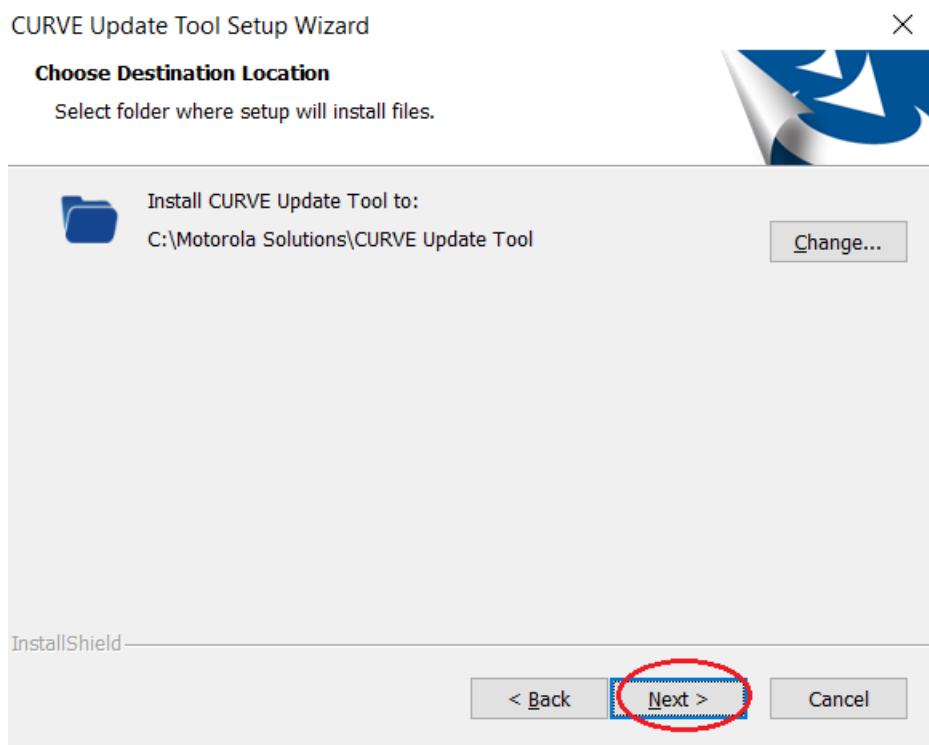
- Click "Next" to install proceed installation.



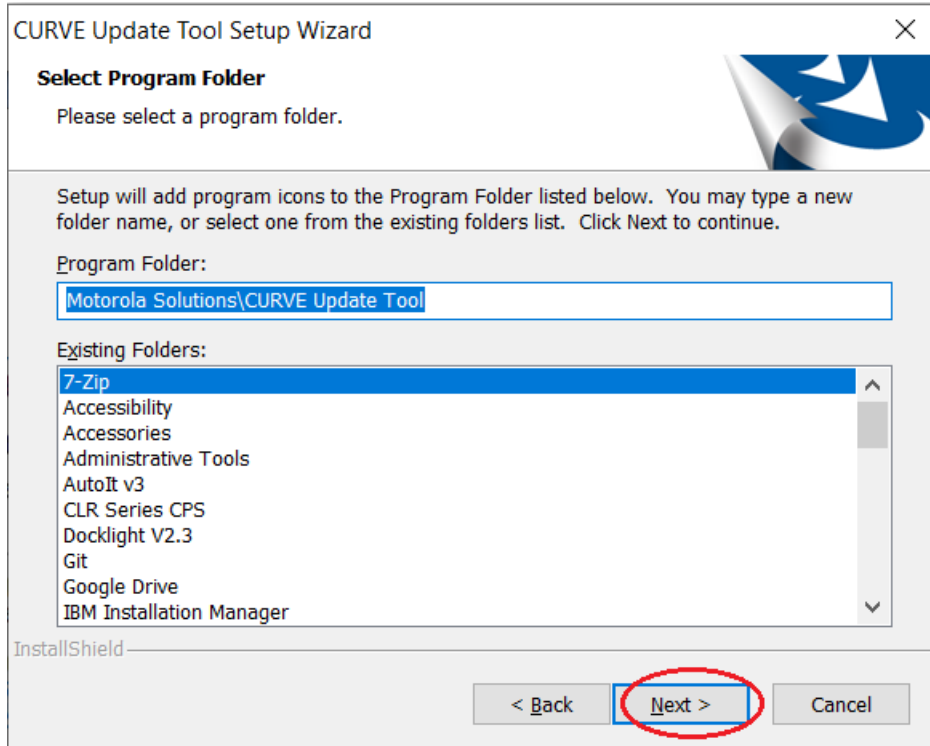
- Click to accept the agreement and click "Next".



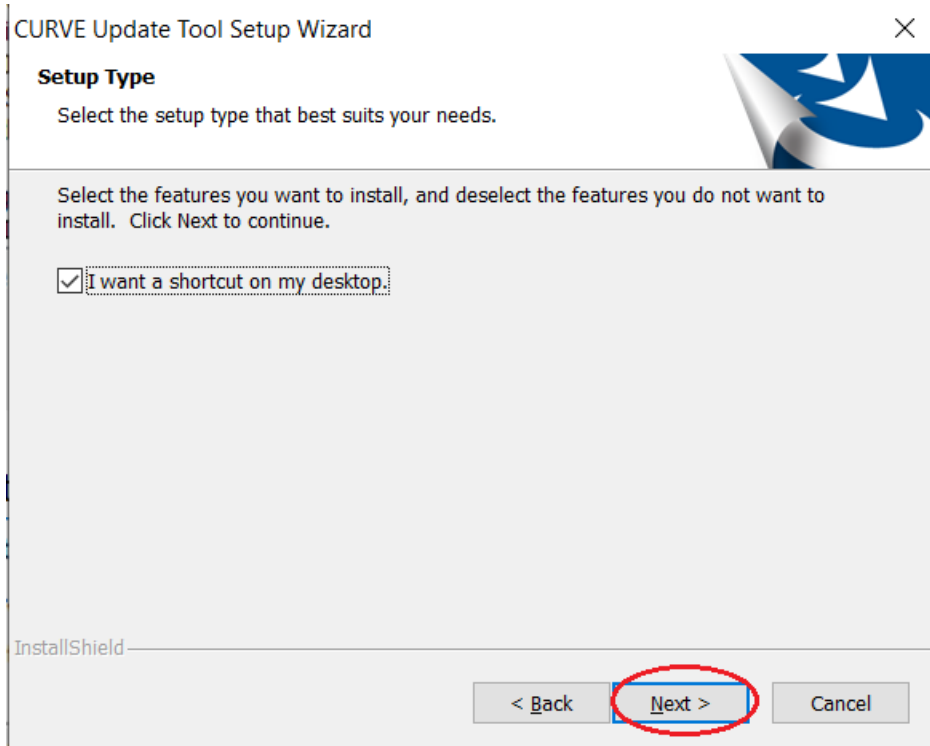
8. Click "Next" to proceed install in default location in your computer.
Please do not change the installation path.



9. Click "Next" to select the default program folder.



10. Click "Next" to proceed the install type.



11. Click "Install" to proceed installation.

CURVE Update Tool Setup Wizard



Ready to Install the Program

The wizard is ready to begin installation.



Click Install to begin the installation.

If you want to review or change any of your installation settings, click Back. Click Cancel to exit the wizard.

InstallShield

< Back

Install

Cancel

12. The installation will take a few minutes.

CURVE Update Tool Setup Wizard



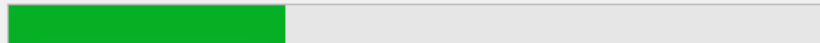
Setup Status



The InstallShield Wizard is installing CURVE Update Tool

Installing

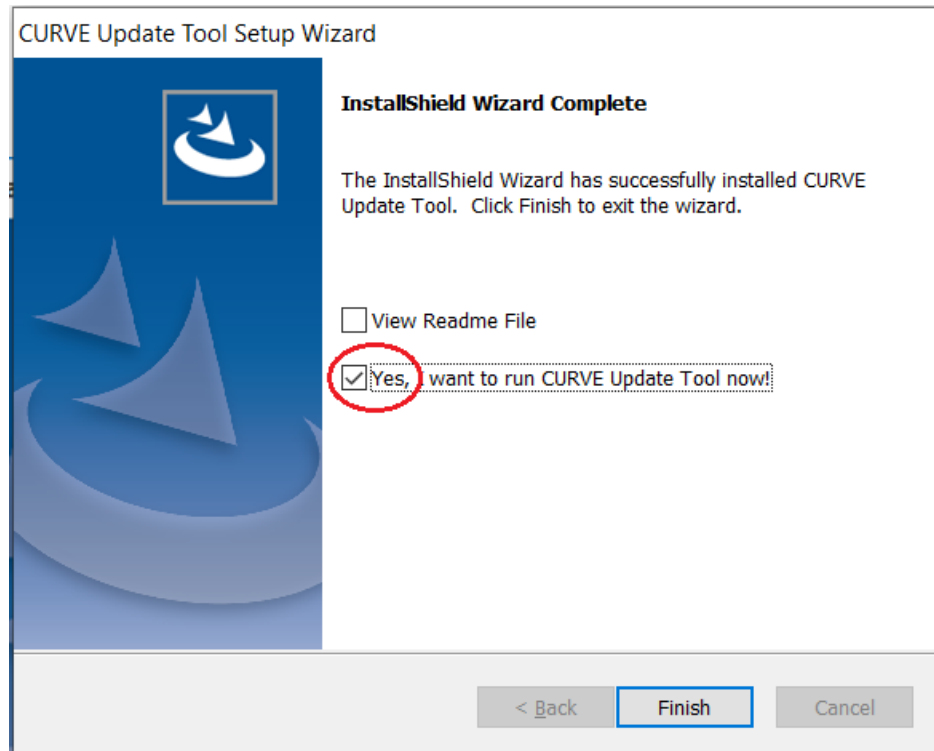
C:\...\driver\extracted\CDM20600\DPInst_Monx64.exe



InstallShield

Cancel

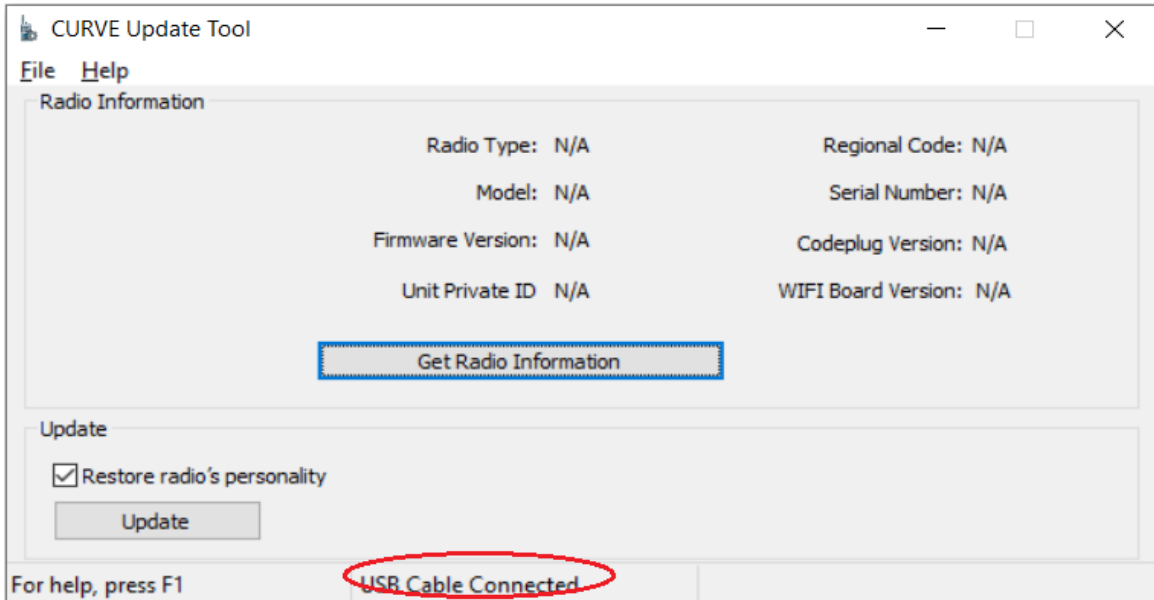
13. Once the installation finish, check the checkbox to run the Update Tool now. Then click “Finish”.



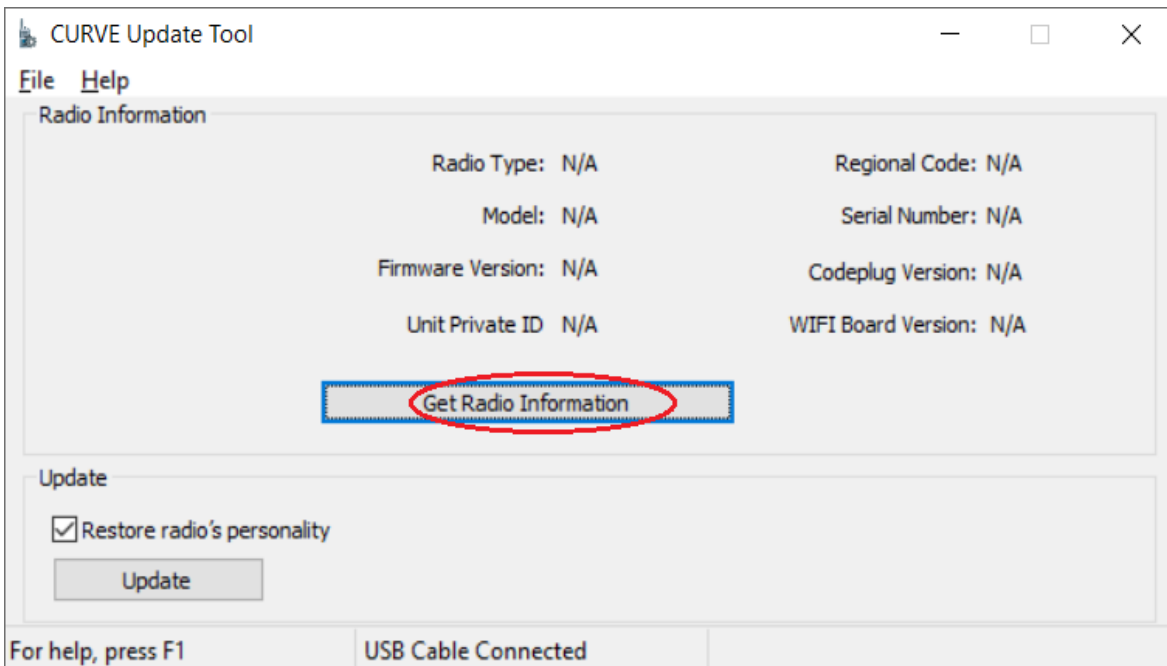
14. This ends your one time setup steps.

Steps to update radio firmware from R01.00.01 to R01.01.00

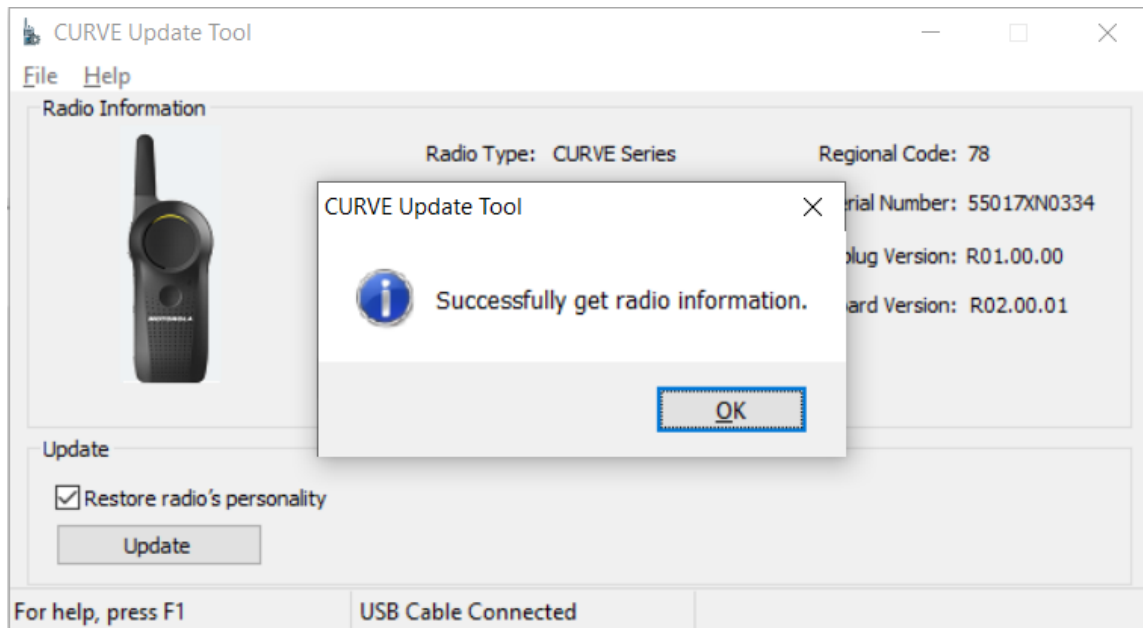
1. Before start, ensure no other USB devices are plugged into your computer except keyboard/mouse and programming cable.
2. Execute/Run the Update Tool program with computer connected to radios via cable and docking station, please wait for a while, you should see “USB Cable Connected” at the bottom of the Update Tool.



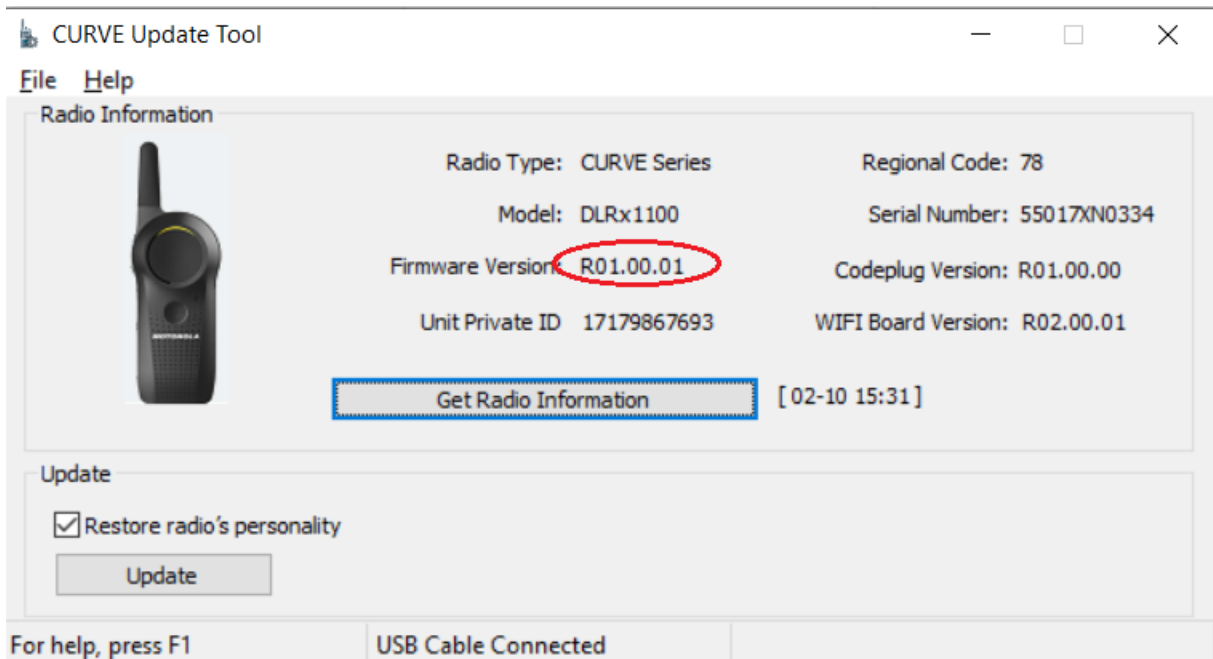
3. If you do not see “USB Cable Connected”, please check if your computer have successfully installed the programming cable driver.
4. **Ensure the battery is full** and inserted into the radio then turned ON the radio. Put the radio onto docking/programming/charging station.
5. Click “Get Radio Information” button to read the current radio information and show on the screen.



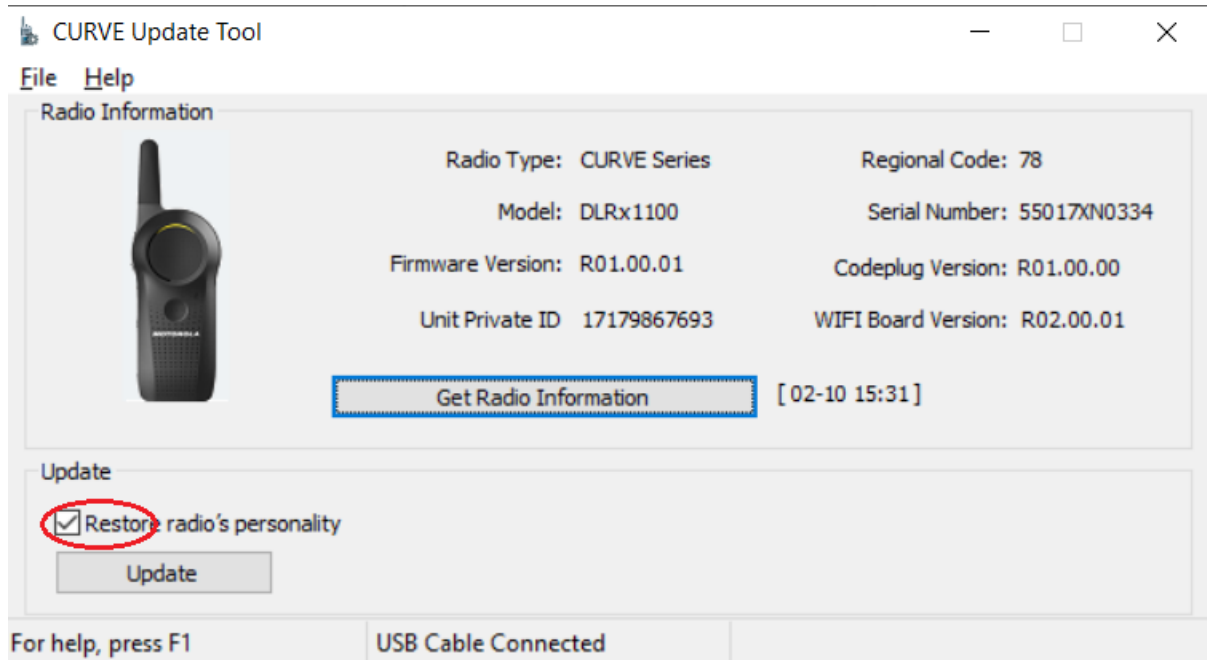
6. Observed a pop up show “Successfully get radio information”.



7. Ensure the radio model is the one you want to upgrade and with current firmware version R01.00.01. Do not proceed with the update if the radio is not the correct model/firmware version.

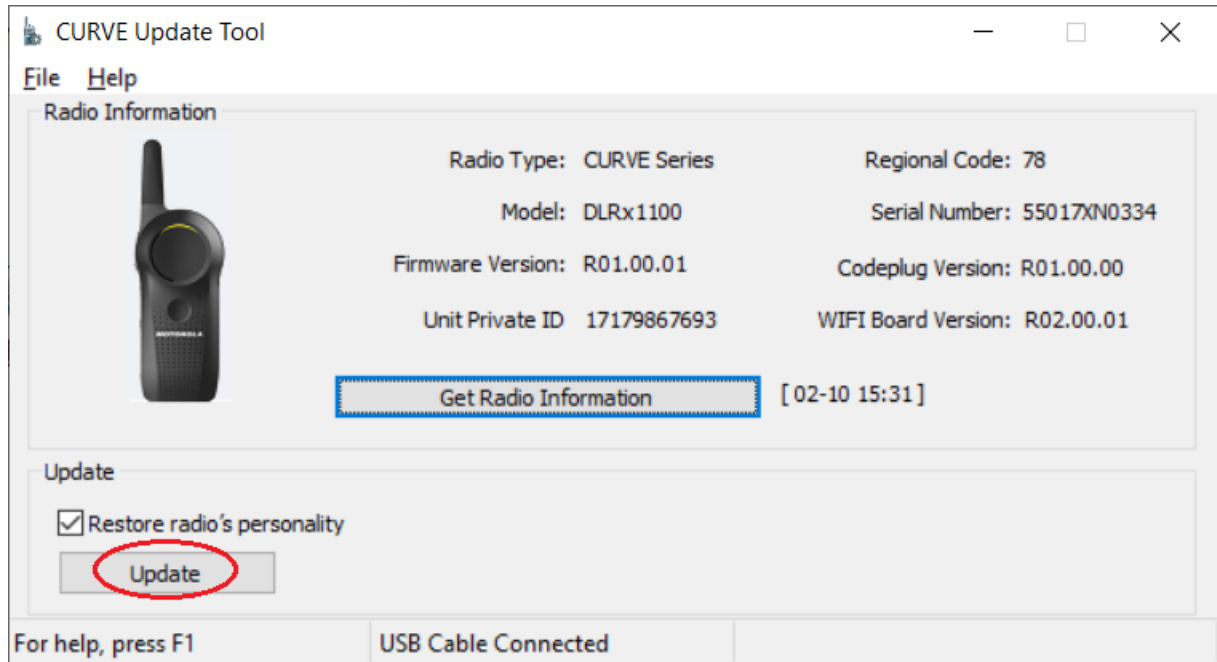


8. Click Restore if need you need to restore your previous configurations.

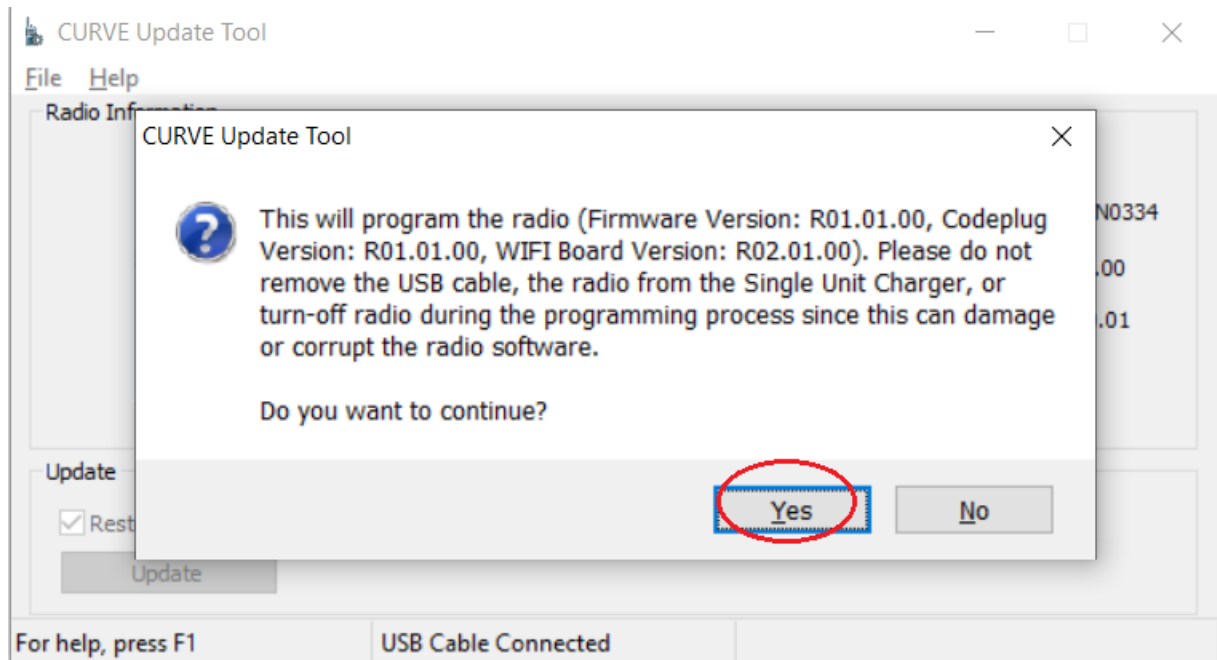


9. Click the "update" button to update the radio to the new firmware.

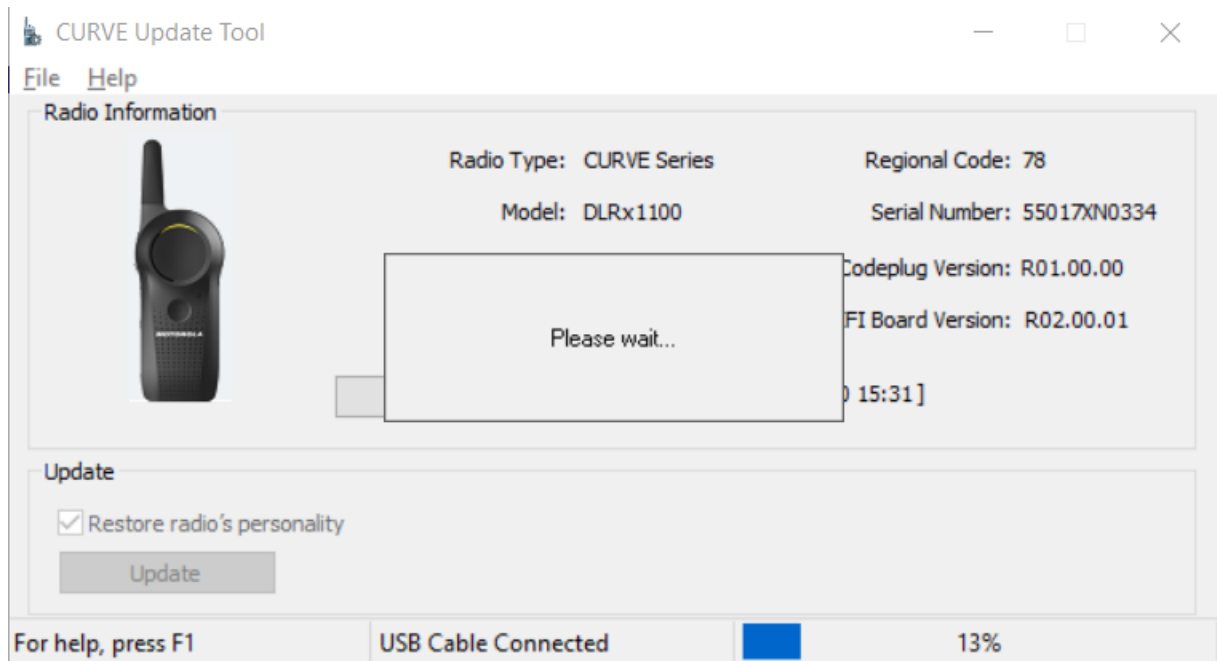
*****Do not disconnect and do not power down the radio during the upgrade process.**



10. A pop up will remind you on your update information and cautious. Click the "Yes" button after you have confirmed the version.

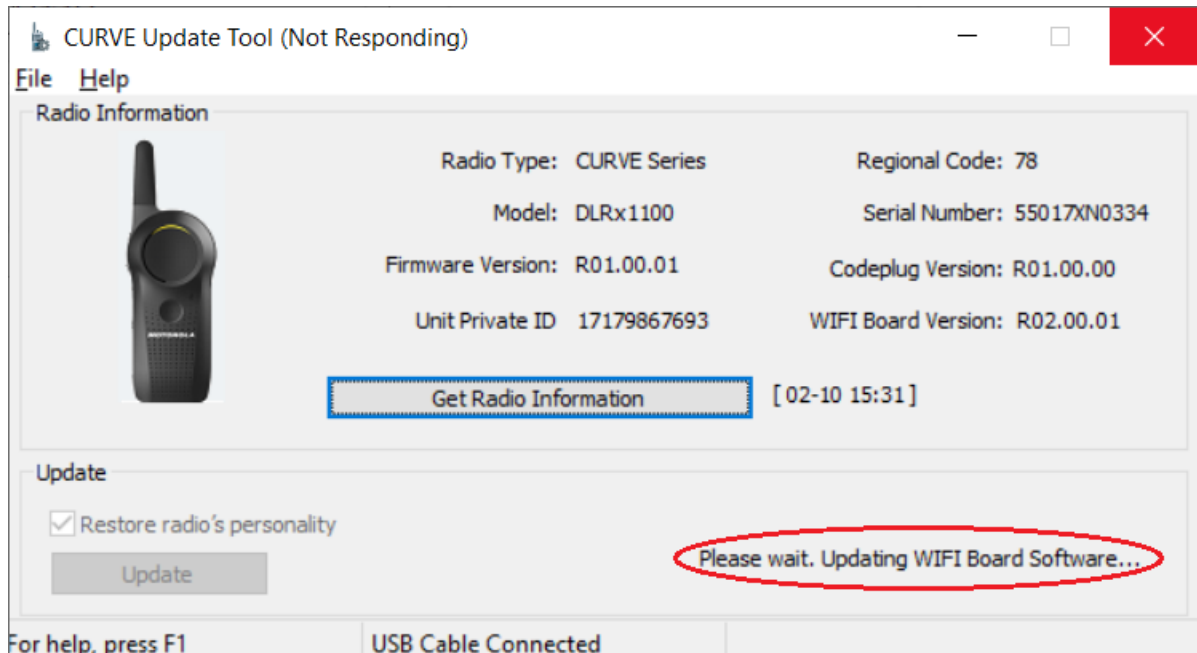


11. Screen will show Please wait and the progress.

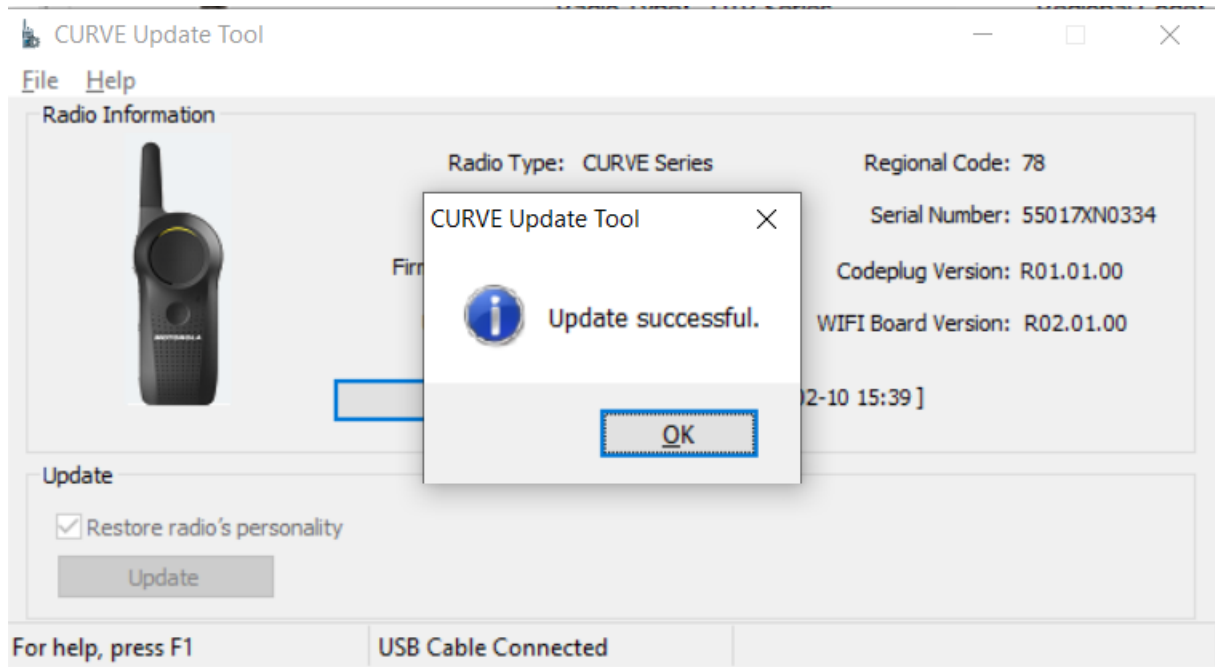


12. Once Firmware upgrade successfully, it will continue to perform WIFI Board upgrade.

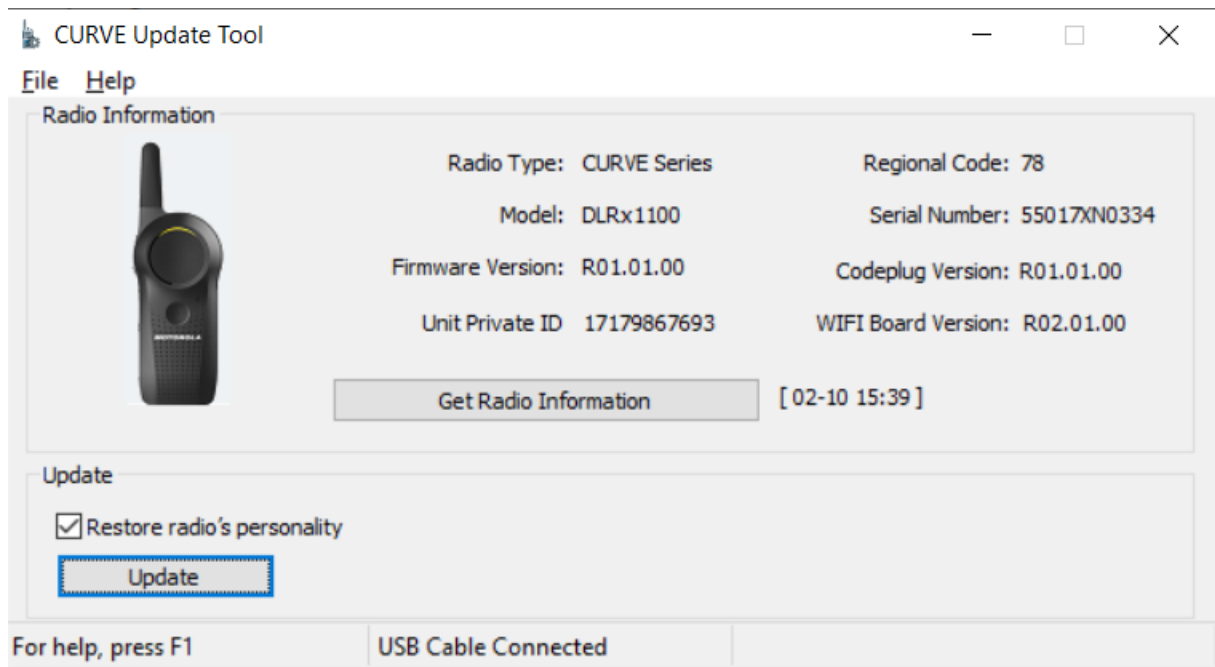
*****Do not disconnect and do not power down the radio during the upgrade process.**



13. Once all update is completed, below screen will be shown.



14. You can now see that the radio has already upgraded to the latest version.



15. Please wait for radio to complete the restart before unplugging the radio from the docking/charging station.

16. If you see failure, please try power cycle your radio and perform an upgrade again.

17. If the radio still cannot upgrade again or if the radio shows any symptom cannot power up or showing any failure, please return your radio for warranty.

Test Steps

After upgrade, follow the steps to check the radio functionality:

1. Power up test - power up the radio as usual. Check if the radio powers up correctly and show the channel.
2. Transmit test - press PTT and ensure the other radio receives the transmission / can hear the audio.
3. Receive test - ensure this radio received the audio from the other radio.
4. Volume up and down test - test volume up and check the audio volume is increased. Test volume down and check the audio volume is decreased.
5. Channel test - change channel on two radios and test by transmitting from one radio and receiving on the other radio. Check if the audio is transmitted through.

Minimum PC Spec requirement

1. Intel core i5-3320M @2.60 Ghz
2. 8 GB RAM
3. Windows 7 Professional SP1, 64-bit OS
4. 320 GB HDD

Notes

*There will be a chance of failing during the update depending on the computer usage and environment.

*Please close all the running applications before start updating.

*If failure persists, please stop upgrade using this computer and try another computer. If failure still persists, please do not perform upgrade and get Motorola to support.